


PROJECT
POMPANO PICKLE
OT PROPERTY GROUP, LLC
217 NE 3rd Street
Pompano Beach, FL 33060

SHEET TITLE

**SITE PARKING
PLAN**

No.	DATE	REVISION
	070225	CITY REVISION

CHECKED	CORONEL ASSOCIATES
DRAWN	CORONEL ASSOCIATES
DATE	05.20.25
PROJECT No.	24-117

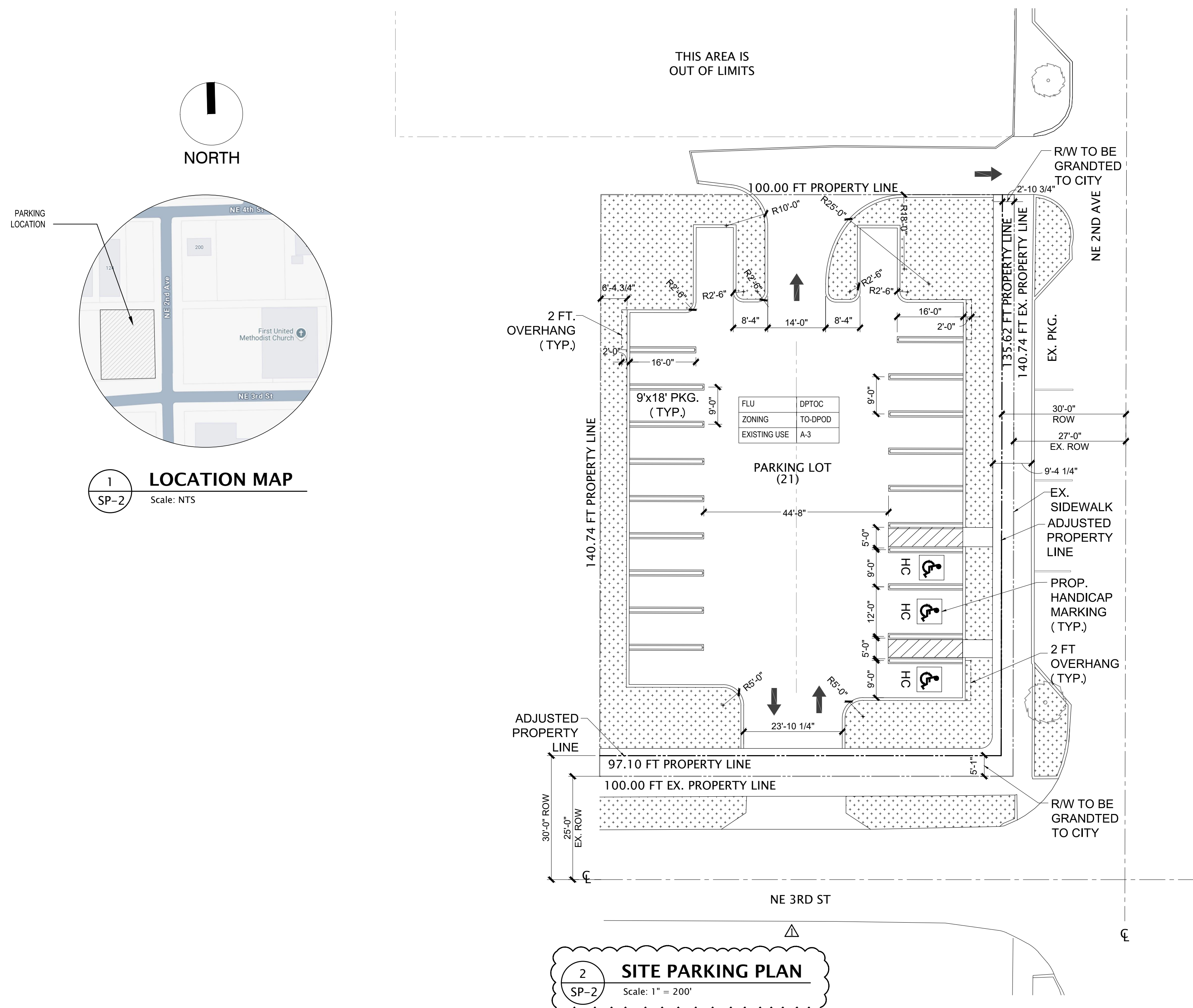
ARCHITECT OF RECORD
ROBERT A. LENAHA
ARCHITECT P. C.
AR98881
2121 N Ocean Boulevard 401 E
Boca Raton, FL 33431
Ofc. 845.639.7492
Rlenahan@optonline.net



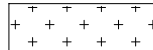


DIGITAL SIGNED

ALL DESIGN, DRAWINGS, REPORTS, SPECIFICATIONS, COMPUTER FILES, FIELD DATA, NOTES AND ANY OTHER DOCUMENTS PREPARED BY THE ENGINEER AS INSTRUMENTS OF SERVICE SHALL REMAIN THE PROPERTY OF THE ENGINEER AND IS NOT TO BE REPRODUCED, COPIED OR ALTERED IN WHOLE OR IN PART. IT IS ONLY TO BE USED FOR THE PROJECT AND SITE SPECIFICALLY IDENTIFIED HEREIN AND IS NOT TO BE USED ON ANY OTHER PROJECT. THE ENGINEER SHALL RETAIN ALL COMMON LAW COPYRIGHT AND OTHER RESERVED RIGHTS THERE-TO. WRITTEN DIMENSIONS

SHEET No.

SP-2



<u>LEGEND</u>		
	PAVERS ON SAND	IMPERVIOUS
	CONCRETE	IMPERVIOUS
	SOD	PERVIOUS
	ARTIFICIAL TURF	IMPERVIOUS
	EXTERIOR COURTS	IMPERVIOUS

LAND USE BREAKDOWN			
LOT AREA	ACRES	SQ. FEET	%
TOTAL	0.30	13,184	100.00%
PERVIOUS	0.08	3,666	27.81%
IMPERVIOUS	0.22	9,518	72.19%

	PROVIDED	REQUIRED
PARKING DATA		
TOTAL BICYCLE PARKING	20	20
TOTAL VEHICLE PARKING	51	51
ON-STREET PARKING		
EXISTING		8
PROPOSED		22
TOTAL		30
ON-SITE PARKING		
PROPOSED		18
ADA (FBC-A TABLE 208.2 PARK SPACES: 2 STANDARDS + 1 VAN)		3
TOTAL		21
NOTE:		FBC
A502.6: SIGNS SHALL INCLUDE THE INTERNATIONAL SYMBOL OF ACCESSIBILITY COMPLYING WITH FBC A703.7.2.1. SIGNS IDENTIFYING VAN PARKING SPACES WHEN REQUIRED BY FBC A502.2 SHALL CONTAIN THE DESIGNATION VAN ACCESSIBLE.		